



# FRINGE

## MICHAEL ANASTASSIADES



Fringe – *frangia* in italiano, un bordo ornamentale costituito da fili o strisce – è la prima collezione disegnata da Michael Anastassiades per Mutina. Si tratta di un elemento formato da segmenti paralleli di due larghezze diverse, incisi direttamente sulla superficie. Le fughe spesse, che creano un effetto simile a quello di un mattone, possono essere sfruttate per dare vita a diversi pattern, semplicemente intrecciando e cambiando l'orientamento dei moduli. In questo modo si ottengono dei tappeti senza soluzione di continuità, con o senza bordi, che delimitano gli spazi adattandosi perfettamente ad ogni ambiente.

La collezione è disponibile in un singolo formato di 12,3x12,3 cm, declinato in due varianti: Thin, con segmenti di 6 mm, e Bold, con segmenti di 15 mm, pensati per essere modulari fra loro con una fuga di 3 mm. Ogni elemento è disponibile in cinque diverse colorazioni: White, Anthracite, Grey, Red e Rose. Il prodotto finale è adatto alla posa in contesti residenziali e commerciali, a pavimento e a rivestimento, sia in ambienti interni che esterni. Consigliamo l'uso di uno stucco colorato epossidico, per garantire stabilità cromatica nel tempo e resistenza all'usura. La resa finale del prodotto è sensibilmente diversa a seconda della colorazione di stucco utilizzato, in tono o a contrasto.



Fringe – ornamental border made of threads or strips – is the first collection designed by Michael Anastassiades for Mutina. It is a tile divided into a series of parallel segments of two widths, directly engraved onto the surface. The pronounced grout spacing forms a “brick like” design and can be woven into multiple patterns through a simple interplay of a change in orientation. The result is a series of seamless carpets with or without borders which demarcate spaces, perfectly adapting to each environment.

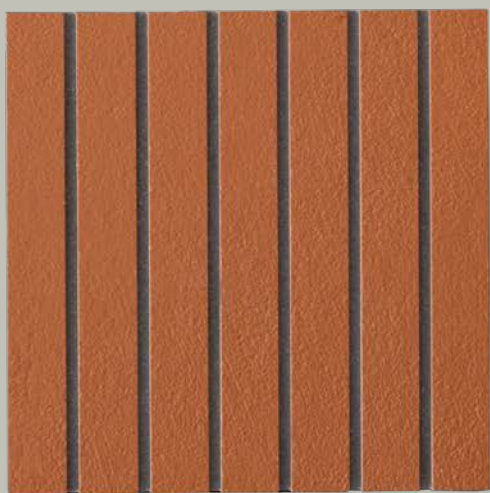
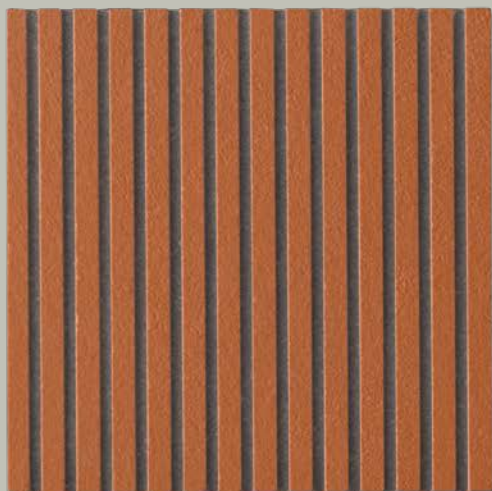
The collection is realised in a single size of 12,3x12,3 cm, declined in two variants: Thin, with segments of 6 mm, and Bold, with segments of 15 mm, conceived to be modular with a joint of 3 mm. Each element is available in five colours: White, Anthracite, Grey, Red and Rose. The final product is suitable for floor and wall institution in both residential and commercial spaces, indoor and outdoor. We advise the use of a coloured epoxy grout, to guarantee great chromatic stability over time and resistance to wear. Depending on the colour of the used grout, in tone or in contrast, the end result changes significantly.



## ONE SIZE, TWO ARTICLES

Fringe è realizzata in un singolo formato di 12,3x12,3 cm, declinato in due varianti: Thin, con segmenti di 6 mm, e Bold, con segmenti di 15 mm, modulari fra loro con una fuga di 3 mm.

Fringe is produced in a single size of 12,3x12,3 cm, declined in two variants: Thin, with segments of 6 mm, and Bold, with segments of 15 mm, conceived to be modular with a joint of 3 mm.



## FIVE COLORS

La collezione è disponibile in cinque diversi colori:  
White, Anthracite, Grey, Red e Rose.

The collection is available in five different colours:  
White, Anthracite, Grey, Red and Rose.

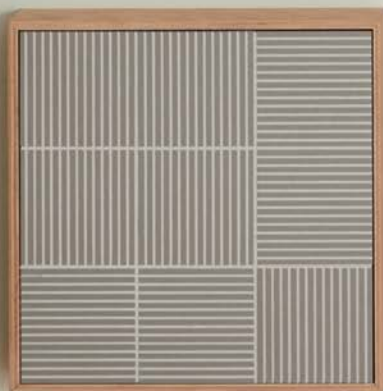
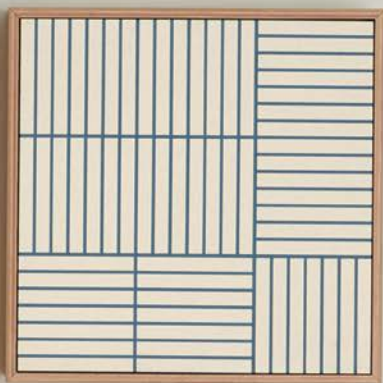
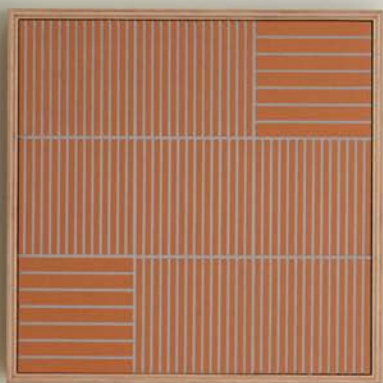
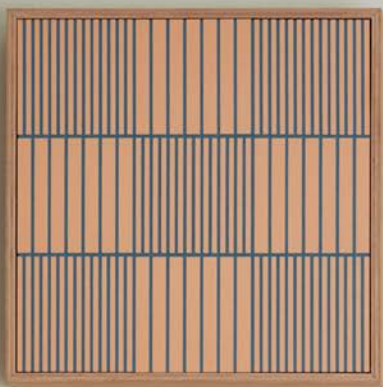


## GROUT

La resa finale del prodotto varia sensibilmente a seconda del colore di stucco utilizzato. Per garantire stabilità cromatica nel tempo e resistenza all'usura, si consiglia di utilizzare uno stucco epossidico.

The end result changes significantly depending on the colour of the used grout. To guarantee a great chromatic stability over time and resistance to wear, we advise to use an epoxy grout.





## MIX WITH A SINGLE ARTICLE

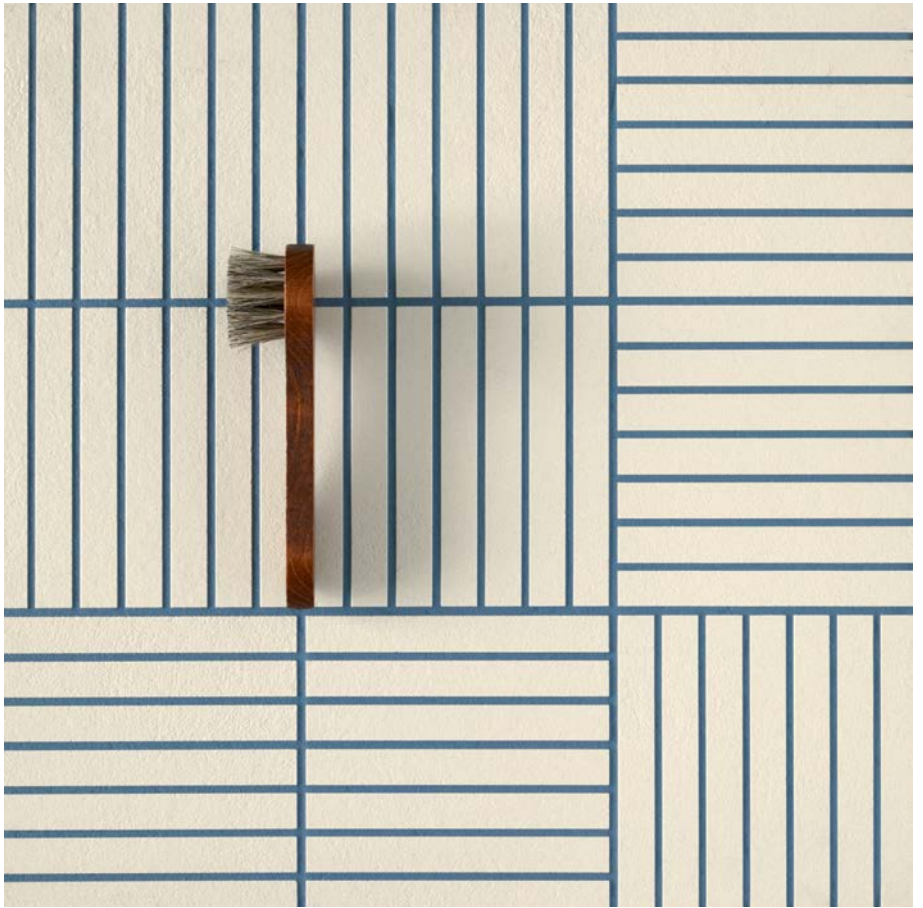
I moduli della collezione, Bold e Thin, possono essere utilizzati singolarmente per decorare le superfici con soluzioni creative e armoniose, che delimitano gli spazi adattandosi perfettamente ad ogni ambiente.

The modules of the collection, Bold and Thin, can be used individually to decorate surfaces with creative and harmonious solutions that demarcate spaces while perfectly adapting to any kind of environment.



**BOLD**

Bold Red grouted with a dark grey color.



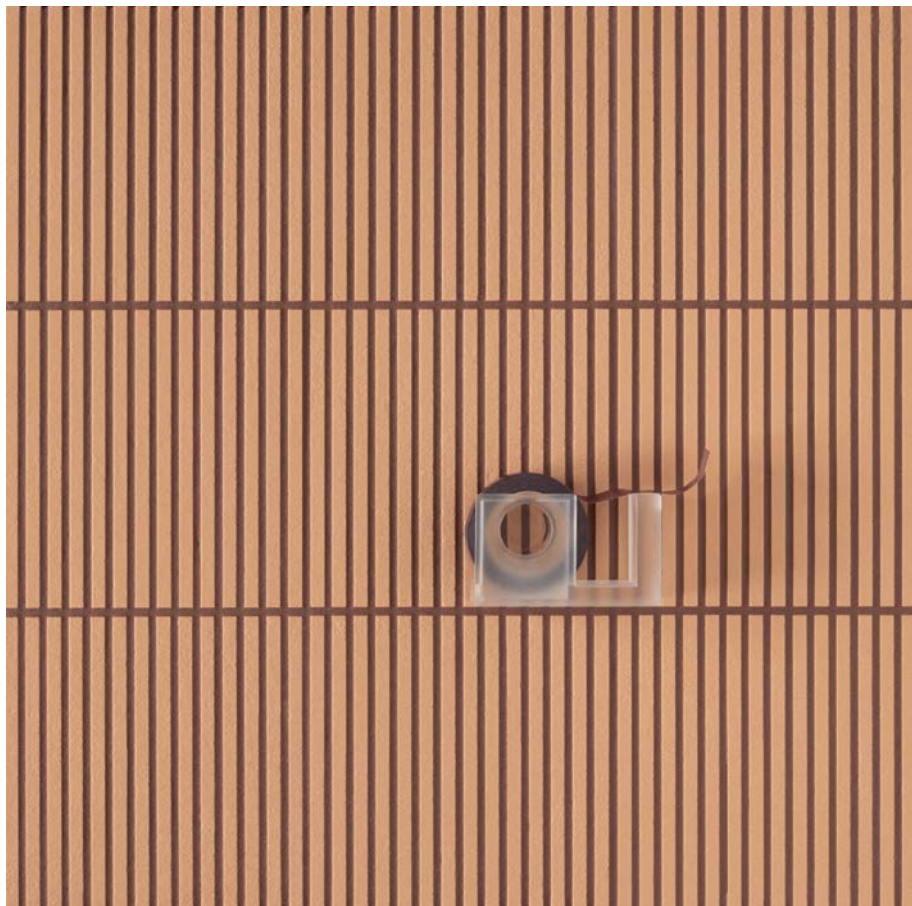
**BOLD**

Bold White grouted with a dark blue color.



**BOLD**

Bold Anthracite grouted with a light blue color.



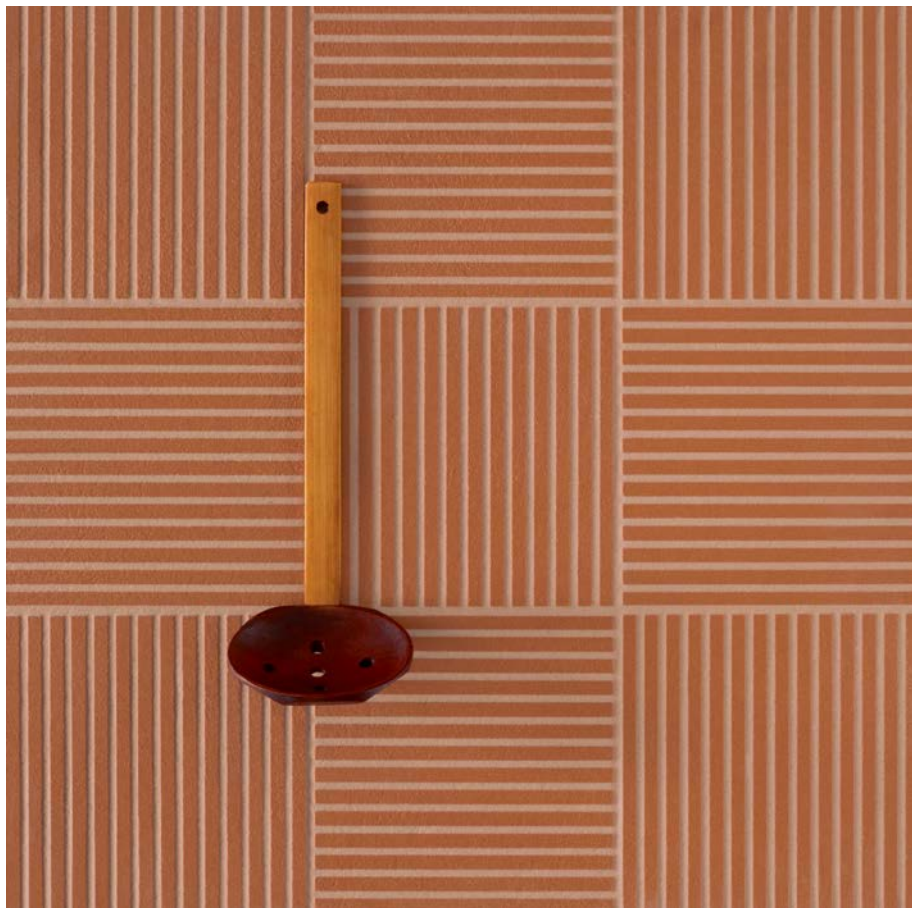
**THIN**

Thin Rose grouted with a dark red color.



**THIN**

Thin Grey grouted with a light grey color.



**THIN**

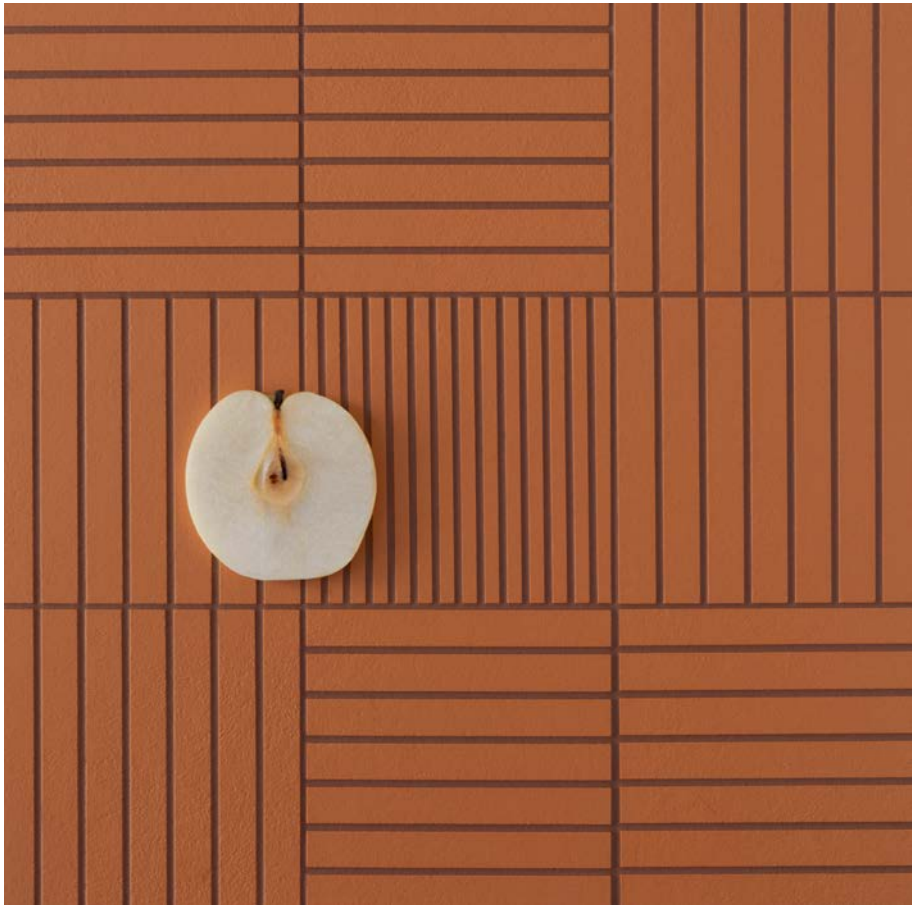
Thin Red grouted with a beige color.



## MIX WITH BOLD + THIN

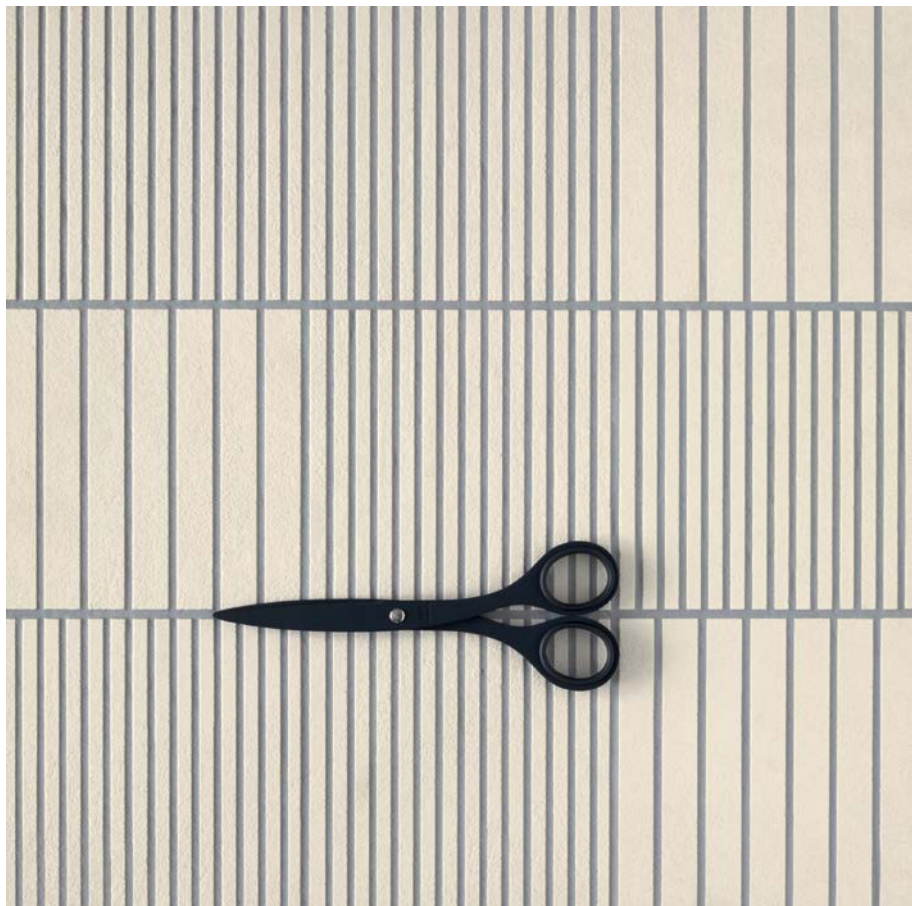
Le varianti Thin e Bold possono essere combinate tra loro, intrecciando e cambiando l'orientamento dei pattern, aprendo così la collezione a infinite possibilità interpretative e composizioni sempre più dinamiche.

The elements Thin and Bold can be combined with each other, through an interplay or by changing the orientation of the pattern, opening the collection to infinite possible interpretations as well as ever more dynamic layouts.



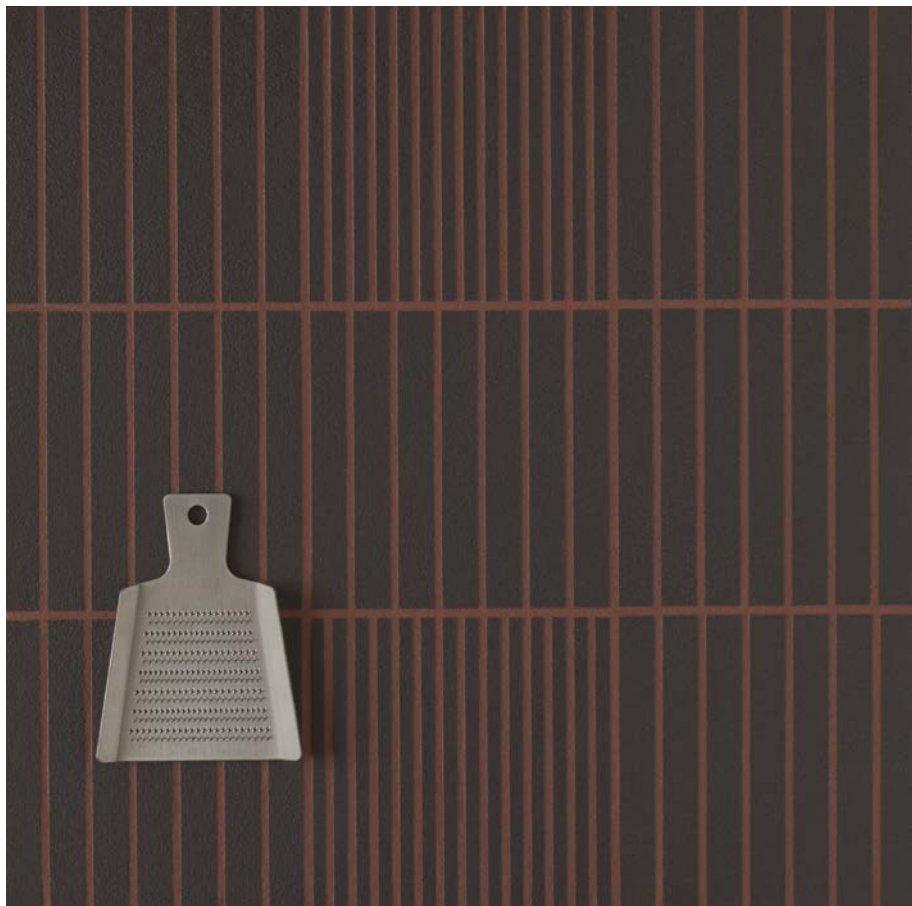
**BOLD + THIN**

Bold Red, Thin Red grouted with a dark red color.



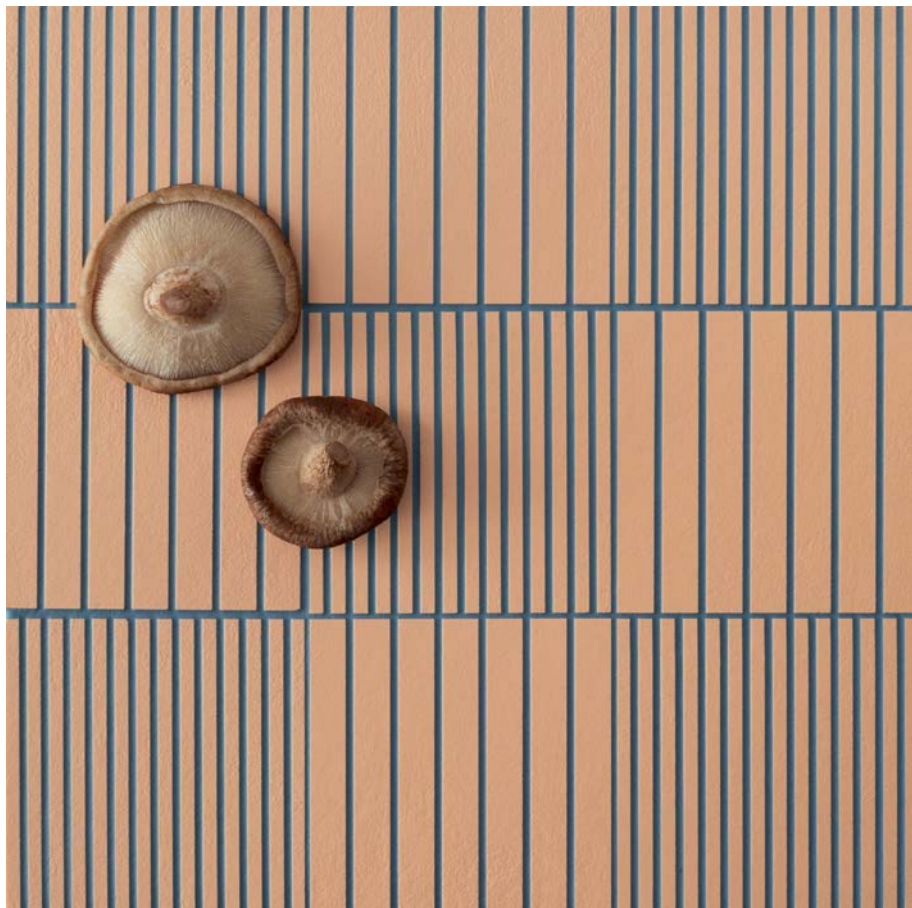
**BOLD + THIN**

Bold White, Thin White grouted with a medium grey color.



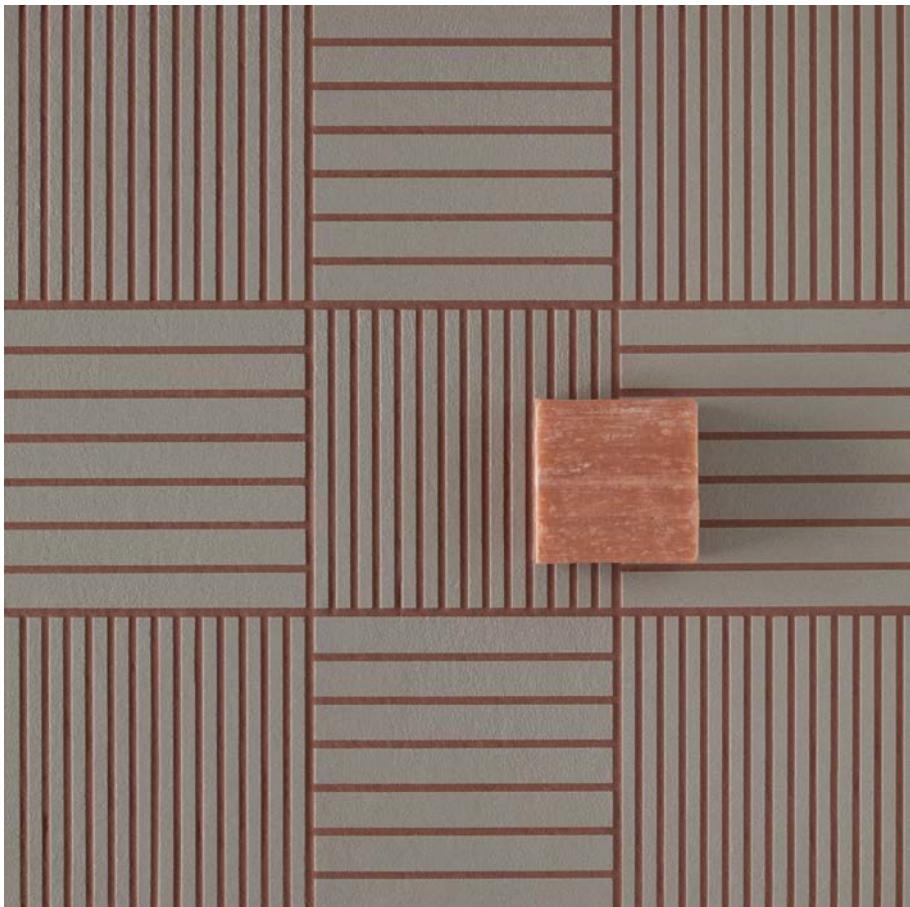
**BOLD + THIN**

Bold Anthracite, Thin Anthracite grouted  
with a dark red color.



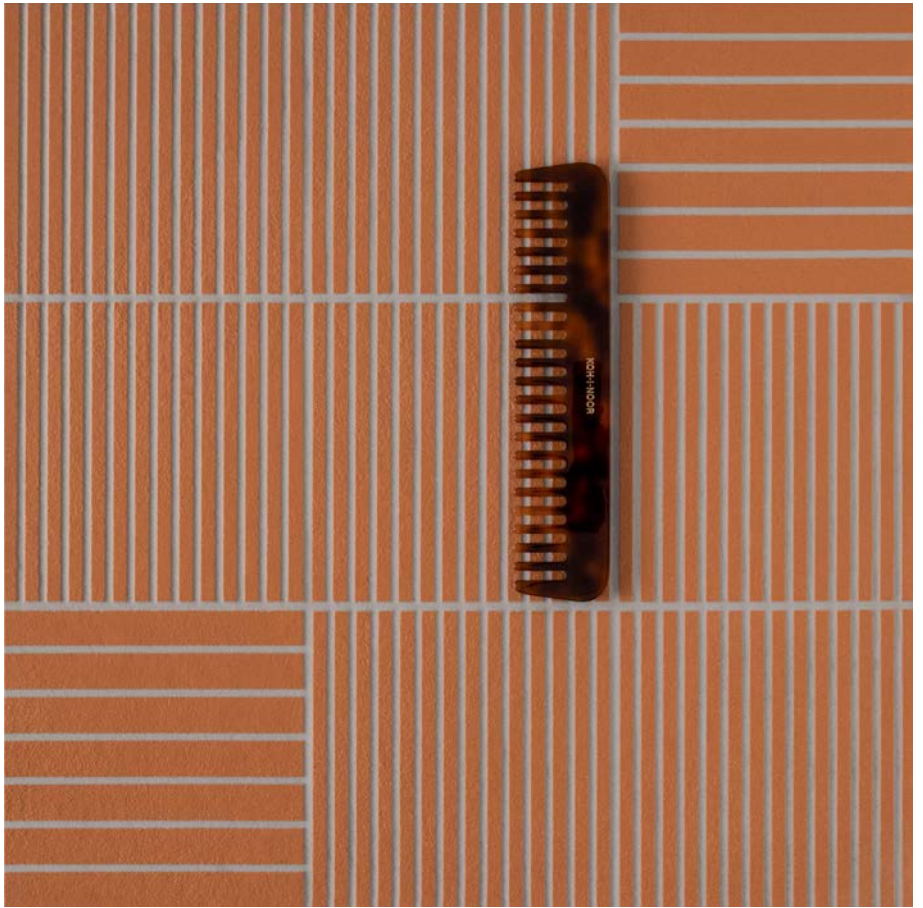
**BOLD + THIN**

Bold Rose, Thin Rose grouted with a dark blue color.



**BOLD + THIN**

Bold Grey, Thin Grey grouted with a dark red color.



**BOLD + THIN**

Bold Red, Thin Red grouted with a medium grey color.







Bold White, Thin White grouted with a medium grey color.



Bold Red, Thin Red grouted with a dark grey color.



Bold Rose grouted with a dark blue color.



Bold Anthracite, Thin Anthracite grouted with a dark red color.



Bold Grey, Thin Grey grouted with a light blue color.

## GENERAL INFORMATION

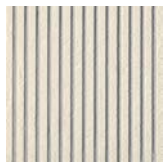
material: unglazed and rectified porcelain stoneware

nominal sizes: 12,3-12,3 cm (5"-5")

thickness: 12 mm

## COLORS

### THIN



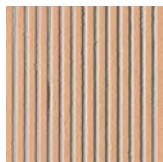
White



Anthracite



Grey

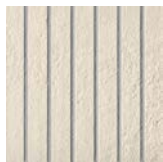


Rose



Red

### BOLD



White



Anthracite



Grey



Rose



Red

## SUGGESTED GROUTS

Per ottenere un risultato estetico ottimale e mantenere la modularità, si suggerisce di posare gli elementi con una fuga di 3 mm. Consigliamo l'uso di stucco epossidico, per garantire stabilità cromatica nel tempo e resistenza all'usura. La resa finale del prodotto è sensibilmente diversa a seconda della colorazione di stucco utilizzato, in tono o a contrasto.

Per maggiori informazioni riguardo la palette colori degli stucchi, si prega di contattare il nostro servizio clienti: [customerservice@mutina.it](mailto:customerservice@mutina.it)

To obtain the best aesthetic result and maintaining the modularity, we recommend to lay the elements with a joint of 3 mm. We advise the use of epoxy grout to guarantee great chromatic stability over time and resistance to wear. Depending on the colour of the used grout, in tone or in contrast, the end result changes significantly.

For more info regarding the grouts and their colour palette, please contact our customer care department: [customerservice@mutina.it](mailto:customerservice@mutina.it)

Scan the QR code to discover more about Fringe.

Printed and bound in Italy. April 2023.

© Mutina 2023 – [mutina.it](http://mutina.it)



